



DREAMS GROW TRUE

at

Hosachiguru
Unnati

farm themed villa plots



Near Chikkaballapur,
45 Mins from KIAL

Unnati

RERA: PRM/KA/RERA/1251/446/PR/190924/007045

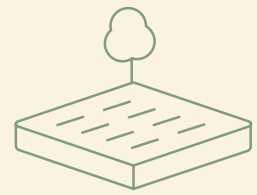
Hosachiguru

You've heard of farms. You've heard of plots.
You've heard of villas.

But
what in
cow's udders
are farm-
themed
villa plots?



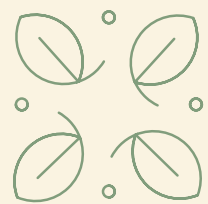
unnati farm-themed villa plots



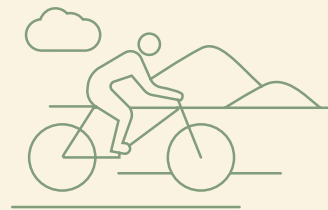
Spacious villa plots
(5400 Sq.ft onwards)



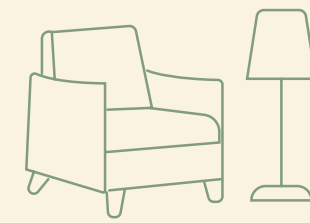
Off-the-beat Community



Sustainable
Living



45 min from
Bangalore Airport



Modern Amenities



Grow your own food



Experienced Service
Team on site
→ Construction Team
→ Farm Team
→ Activities Team



finally,
some peas
and quiet
from
Bangalore?

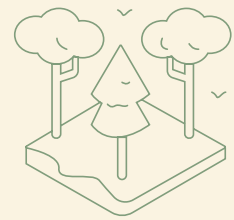


*Yes,
but also no.*

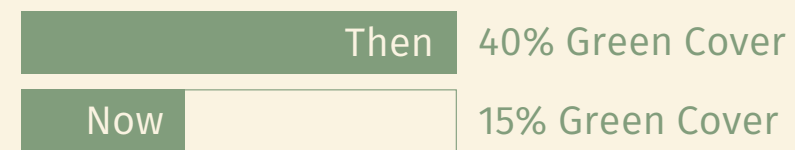
At Unnati, you experience the old Bangalore life. Beautiful bungalows on large plots teeming with plants, trees and life. Children playing outside in weather that can only be described as perfect. Fresh air. Clean water and bountiful earth.



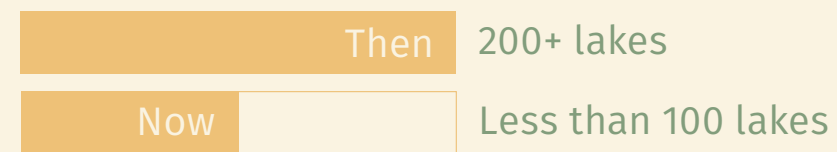
What changed in Bangalore?



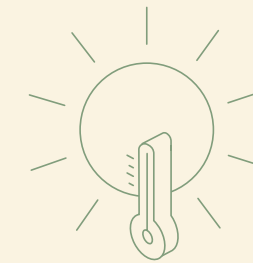
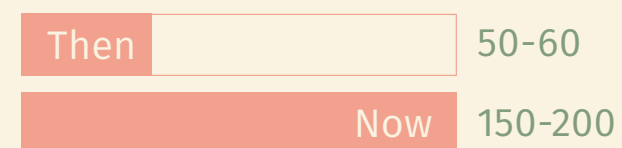
Trees



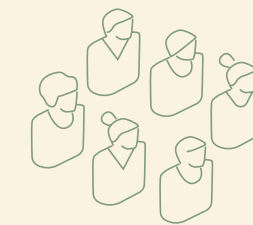
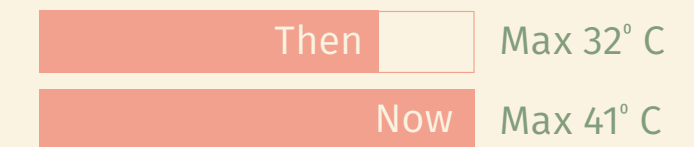
Lakes



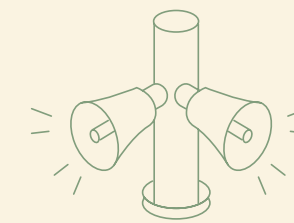
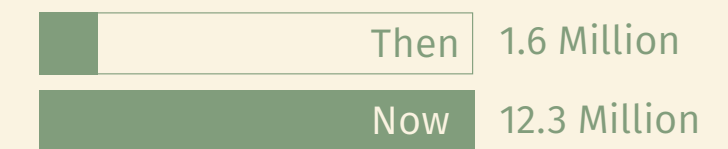
Air Purity



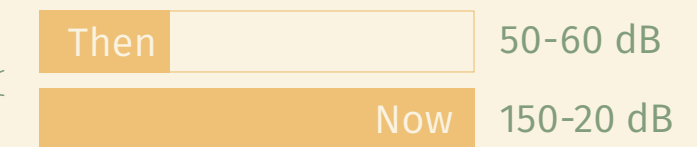
Temperature



Population



Noise Level



how
do we
know
you
practice
what you
preach?



by applying the philosophies of permaculture, we're creating a sustainable future.

Permaculture is a design philosophy that emphasizes sustainable and self-sufficient ecosystems.



Care for the earth

Ensuring all living systems can continue and multiply.



Care for people

Ensuring people have access to the resources necessary for their existence.



Fair share

Governing our own needs and setting limits to consumption.





Creative response to change



Observe and interact



Catch and store energy



Obtain a yield



Use the edges



Use and value diversity



Use small & slow solutions



Apply self regulation



Integrate rather than segregate



Design from patterns to details



Produce no waste



Use renewable resources

The 12 Principles of

Permaculture

A morning drive to your weekend revive.



Proximity to Bangalore, Nandi Hills, Skandagiri, KIAL



Surrounded by picturesque hills.



Enjoys a moderate climate throughout the year.



Well-connected via the NH 44.



Proximity to reputed educational institutions and healthcare facilities.



⌚ Proximity 45 Min from Airport Toll

⌚ 5 min from NH 44, Hyderabad Highway

⌚ 15 Min to Nandi Medical college

⌚ Gudibande Fort - 15 Min

⌚ 30 Min to Isha Foundation

⌚ 10 Min to Big Bay, Highway Pit stop

⌚ Chitravathi River Reservoir - 15Min

⌚ Skandagiri, 35 Min

Vastu Compliant Plots

<Need Details>





Amenities & Features



Bonfire Spot



Exclusive Pet Zones



On-Site Farm Team



MyFarm App



Futsal Arena



Jungle Gym

Clubhouse Features



Library



Banquet Hall (Cap. 100)



Indoor Games



Pickleball Court



Swimming Pool



Rooms for Stay





think of
it as an
unbeatable
investment



Invest in the luxury of the future.



Air

- Clean and pure air through dense tree plantation
- Use of green energy solutions



Water

- Sustainable water management practices.
- Rainwater harvesting and efficient irrigation systems.
- Conservation of local water bodies.



Earth

- Healthy soil through organic farming techniques.
- Permaculture principles to maintain soil fertility and biodiversity.
- Minimizing chemical usage and promoting natural fertilizers.

Invest in the planet.

Reduce Carbon Footprint

Invest in an asset class that reduces impact on environment & converts drylands to sustainable arable land.

Bio Diversity

Syntropic and permaculture farming methods increase bio-diversity and creates a haven for flora and fauna.

Community & Economy

Livelihood for local farmers and staff.



*the
hosachiguru
advantage*

The team

Permaculture Team
to help design your farm in your way.

Project Management Team
to help build your dream home

In-House Service Team
to manage your farmhouse .

Café & Kitchen
for healthy nutritious food during
your farmhouse stay.

Program Coordinators
that run continuous activities that
teach sustainable living and farming.

600+
co-farmer
community

1000+ acres
of managed
farmplots

20 farms

1 million+
trees

10 + years of
experience

The logo for Hosachiguru Unnati features a stylized green leaf icon to the left of the text. The word "Hosachiguru" is written in a bold, sans-serif font, and "Unnati" is written in a smaller, regular sans-serif font directly below it.

Hosachiguru
Unnati

*Get in touch for
an online walkthrough*

*or to arrange
a weekend visit.*

+91 95134 64100
connect@hosachiguru.com
www.hosachiguru.com